

## Consumer Advice

**CONTRACTOR SELECTION:** Contractors are independently owned and operated. Choose a qualified, licensed contractor who provides written specifications, quotations, and example projects for you to see, before making your decision to buy. Your contractor should have experience in placement of colored concrete.



**PLANNING:** Job-site Test Sample: Concrete color is altered by many factors including cements, aggregates, slump(water), admixtures, finishing practices, curing methods, and weather. Like all natural materials, variation is normal in concrete, both uncolored and colored. A fully cured, job-site test sample should be cast for approval, especially when special finishes are specified, or when placing vertical concrete.

Budget for quality craftsmanship; placement, finishing, and curing require time and care.

## Maintenance Information

**EFFLORESCENCE:** A white powdery substance sometimes appearing on the surface of a concrete or mortar product, as a result of water evaporation; more noticeable on colored surfaces.



Low water-cement ratios, curing compounds, and less permeable mix designs, can help guard against water penetration, and reduce the tendency of efflorescence to occur.

If caught early, remove with detergent cleaner formulated for concrete and water wash. Follow cleaner instructions and test in a small area to make sure cleaner will not etch or discolor the cement surface. Acid cleaners may etch or discolor the cement surface. Sealing the concrete surface is suggested to minimize further water penetration and efflorescence.

**WEATHERING:** Concrete color and texture may change over time due to pollutants, dirt, or surface wear. Use of a sealer will help protect against the effects of weathering. Ferrispec iron and chromium oxide pigments are weather resistant, and meet ASTM C979 specifications. For additional information, refer to INGREDIENTS section.

**CLEANING:** Power-washing may etch or expose more of the aggregate color and texture, as it removes the surface cement paste and contaminants with it.



Base Cement Color Sample



BO5289 Cocoa 1-1/2%



BO5289 Cocoa 3%



BO5289 Cocoa 6%



BA3438 Tan 1-1/2%



BA3438 Tan 3%



BA3438 Tan 6%



RB6097 Burgundy 1-1/2%



RB6097 Burgundy 3%



RB6097 Burgundy 6%



BA3461 Salmon 1%



BA3461 Salmon 2%



BA3461 Salmon 4%



BO2590 Desert Tan 1-1/2%



BO2590 Desert Tan 3%



BO2590 Desert Tan 6%



NB0201 Terra Cotta 1-1/2%



NB0201 Terra Cotta 3%



NB0201 Terra Cotta 6%



BO5774 Acorn 1-1/2%



BO5774 Acorn 3%



BO5774 Acorn 6%



XB5599 Charcoal Black 1%



RB4097 Canyon Red 3/4%



BA3415 Chamois 1%



XB5599 Charcoal Black 2%



RB4097 Canyon Red 1-1/2%



BA3415 Chamois 1-1/2%



XB5599 Charcoal Black 2-1/2%



RB4097 Canyon Red 2%



BA3415 Chamois 2%



XB5599 Charcoal Black 5%



RB4097 Canyon Red 3%



BA3415 Chamois 3%



XB5599 Charcoal Black 7-1/2%



RB4097 Canyon Red 6%



BA3415 Chamois 6%



RB2199 Tile Red 1/2%



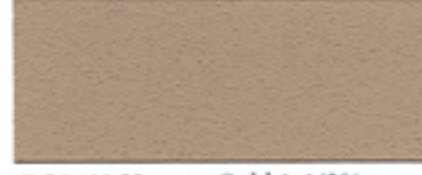
BO7489 Harvest Gold 3/4%



GO4104 Slate Green 1-1/2%



RB2199 Tile Red 1%



BO7489 Harvest Gold 1-1/2%



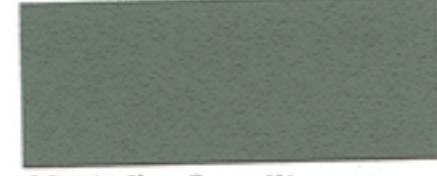
GO4104 Slate Green 3%



RB2199 Tile Red 2%



BO7489 Harvest Gold 3%



GO4104 Slate Green 6%



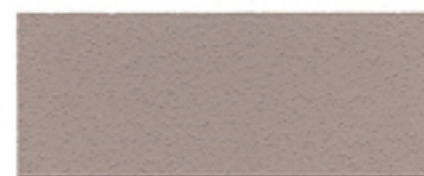
RB2199 Tile Red 4%



BO7489 Harvest Gold 6%



GO4099 Fern Green 1-1/2%



BO4359 Buckskin 1/2%



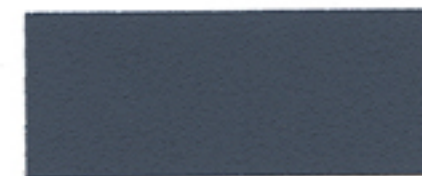
\*SC1045 SuperJet Black 1/4%



GO4099 Fern Green 3%



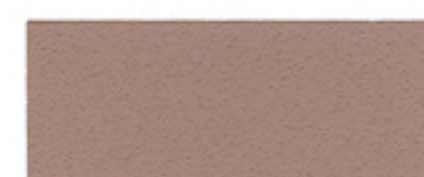
BO4359 Buckskin 1%



\*SC1045 SuperJet Black 1/2%



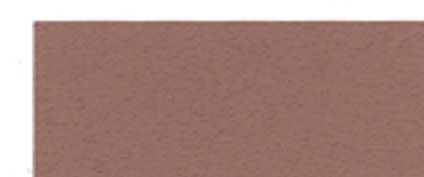
GO4099 Fern Green 6%



BO4359 Buckskin 1-1/2%



\*SC1045 SuperJet Black 1%



BO4359 Buckskin 3%



\*SC1045 SuperJet Black 1-1/2%



BO4359 Buckskin 6%



\*SC1045 SuperJet Black 2%